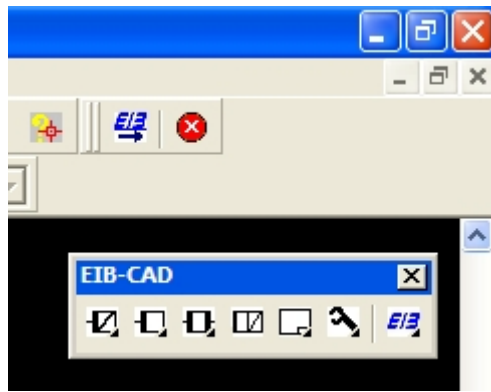
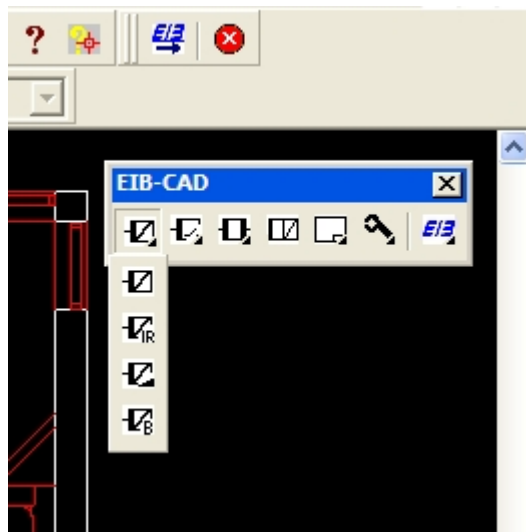


Snapshots from EIB-CAD

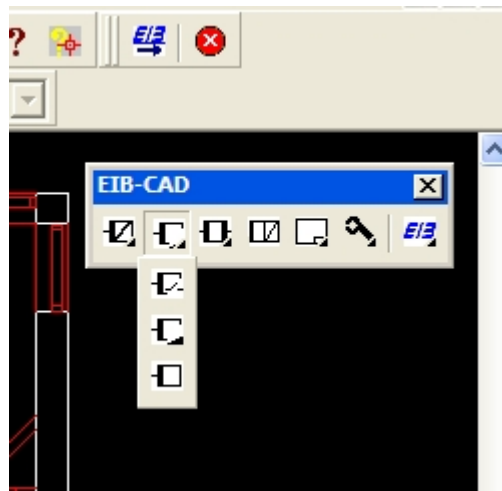
The application are developed for AutoCAD 2000(LT),2002(LT) and the menu language are English. The application has several functions such as associated attributes (physical address, order no, placement, description etc.), possibility to extract data for calculation, order, and programming. Each component has hyperlinks to more information. More detailed product specification will be available later.



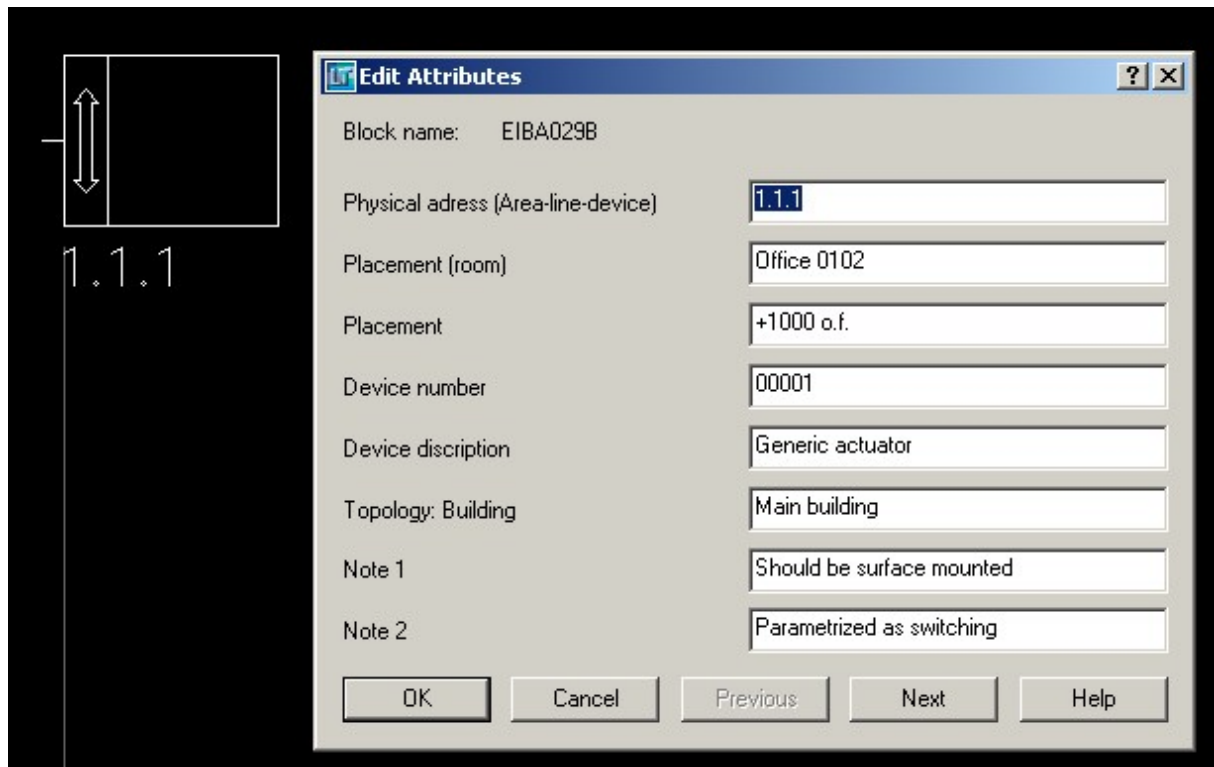
Standard toolbar



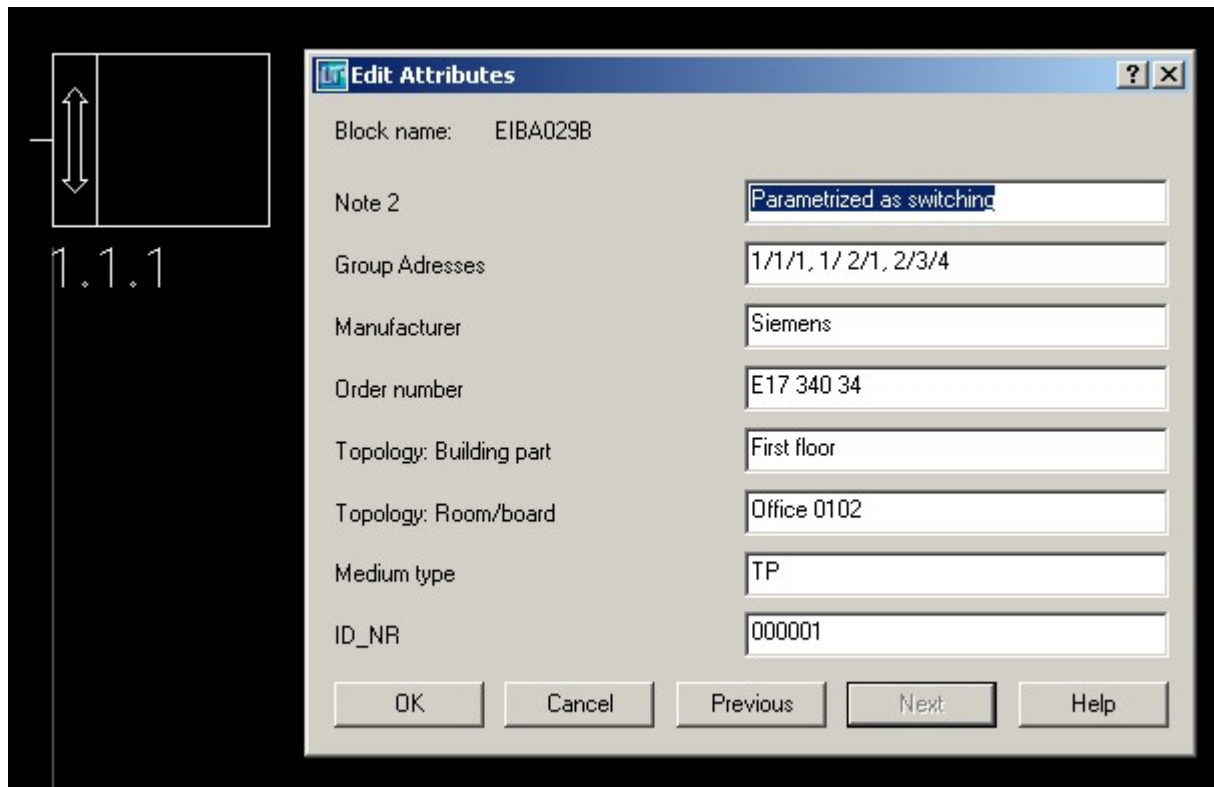
Standard toolbar with the sensor flyout visible



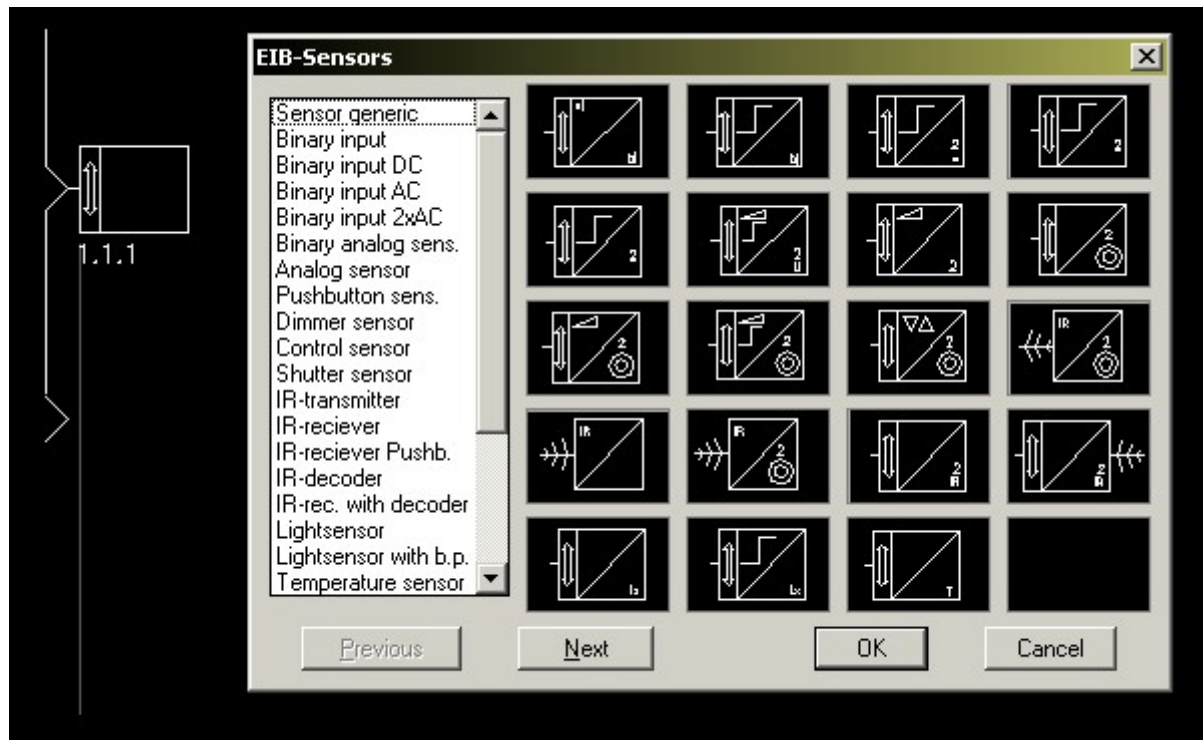
Standard toolbar with the aktuator flyout visible



The "edit data-tags" dialog in which the properties can be edited. This info is exported with the data-extraction for calculation, order and programming etc.



Page two of the "edit data-tags" dialog



The sensor image menu

Component specification EIB-CAD

Phys. Adf.	Placement (room)	Device Placement	Device nr.	Device descr.	Note 1	Note 2	Group addresses	Manufacturer	Order nr	Topology buildingpart	Topology: Room/board	Medium type	ID nr.	
1.1	Office 0102	+1000 o.f.	000001	Generic actuator	Should be surface mounted	Parametrized as switching	1/1/1, 1/2/1, 2/3/4	Siemens	E17 340 34	Main building	First floor	Office 0102	TP	0000001
1.2	Office 0104	+1000 o.f.	000002	Generic actuator	Should be surface mounted	Parametrized as switching	1/1/1, 1/2/2, 2/3/5	Siemens	E17 340 34	Main building	First floor	Office 0104	TP	0000002
1.3	Office 0106	+1000 o.f.	000003	Generic actuator	Should be surface mounted	Parametrized as switching	1/1/1, 1/2/2, 2/3/6	Siemens	E17 340 34	Main building	First floor	Office 0106	TP	0000003
1.4	Office 0108	+1000 o.f.	000004	Generic actuator	Should be surface mounted	Parametrized as switching	1/1/1, 1/2/3, 2/3/7	Siemens	E17 340 34	Main building	First floor	Office 0108	TP	0000004
1.5	Office 0110	+1000 o.f.	000005	Generic actuator	Should be surface mounted	Parametrized as switching	1/1/1, 1/2/3, 2/3/8	Siemens	E17 340 34	Main building	First floor	Office 0110	TP	0000005

Exported data for calculation, order and programming